

# TEMPLATE T-485

Effective date: October 1, 2024  
Supercedes: All Previous

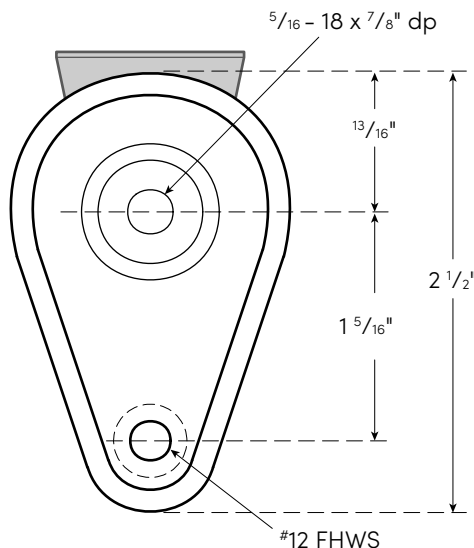
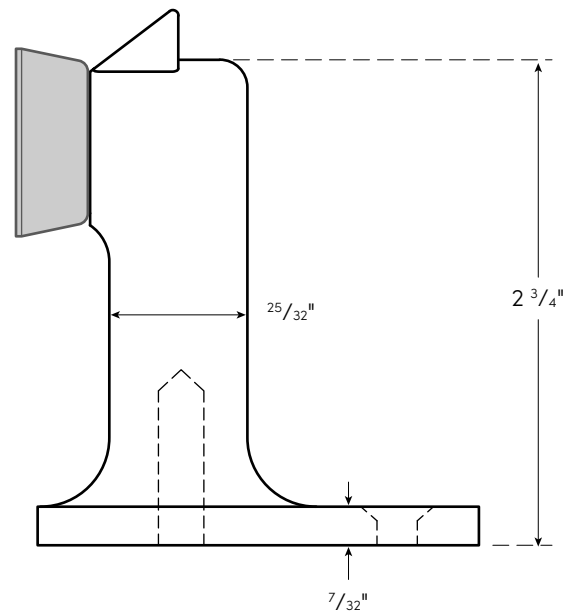
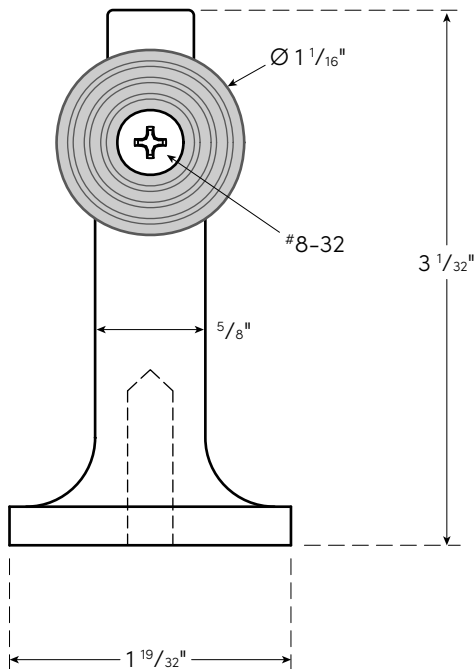
**NOT TO SCALE**

**ROCKWOOD®**

**ASSA ABLOY**

Experience a safer  
and more open world

## ROCKWOOD 485 DOOR STOP



### **⚠ WARNING**

This product can expose you to lead which is known to the state of California to cause cancer and birth defects or other reproductive harm. For more information go to [www.P65warnings.ca.gov](http://www.P65warnings.ca.gov).

### **MATERIAL:**

Solid Cast Brass with Rubber Bumper

### **FASTENERS NOTE:**

$\frac{5}{16}'' - 18 \times 1 \frac{3}{4}''$  Stud, Anchor (Prep for Anchor -  $\frac{5}{8}''$  drill bit);  
 $\#12 \times 1 \frac{1}{4}''$  Flat Head Wood Screw, Plastic Anchor