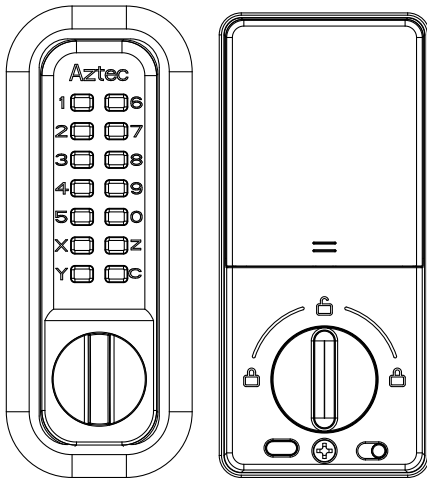


# AZTEC

# EAGLE

## Smart Lock User Manual

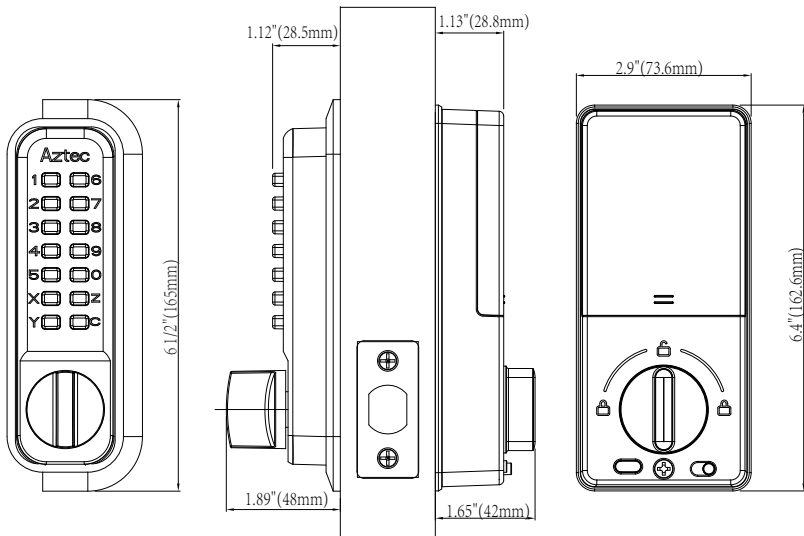


# I . Product Introduction

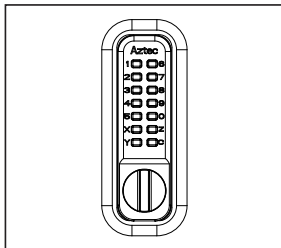
## 1. Product Parameters

Bluetooth Standard	Bluetooth 4.1 BLE
Supported Mobile Phone	Android 4.3 /IOS 7.0 or above
Power Supply Mode	4 Alkaline Dry Batteries
Low Voltage Alarm	4.8V
Voltage Range	4.5 - 6V
Standby Current	65 $\mu$ A
Working Current	Less than 200 mA
Unlocking Time	$\approx$ 1.5 seconds
Operating Temperature	-4 - 158°F
Key Type	Capacitive Touch Button
Unlocking Methods	Key Presses or TUYA app

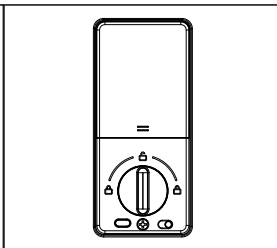
## 2. Product Dimensions



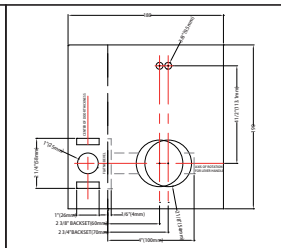
### 3. Packing List



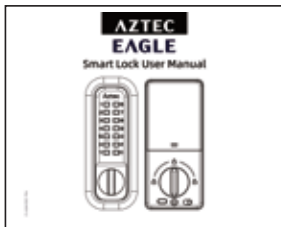
1. Front Panel



2. Back Panel



3. Opening Size Diagram



4. User Manual

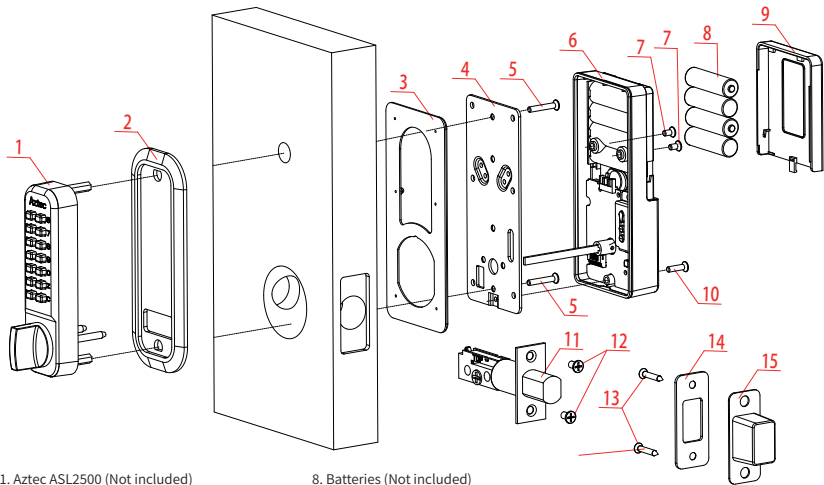


5. Installation Screw



6. Gateway

## 4. Installation Picture



1. Aztec ASL2500 (Not included)
2. Aztec exterior cover plates (Not included)
3. Aztec Eagle interior cover plate
4. Aztec Eagle interior mounting plate
5. M4x30 2 screws (Not included)
6. Aztec Eagle interior lock body
7. M4x8 Screws

8. Batteries (Not included)
9. Battery Cover
10. M4x16 screw (Not included)
11. Adjustable deadbolt (Not included)
12. M5x10 screw (Not included)
13. Strike plate screws 4x252 (Not included)
14. Strike plate (Not included)
15. Dust box (Not included)

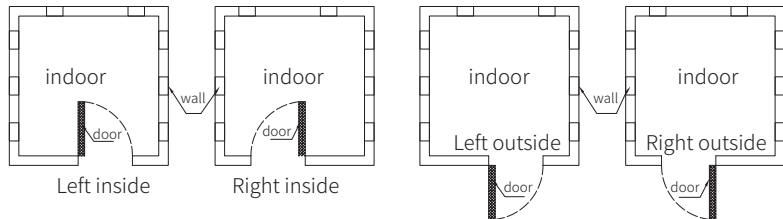
# II. Installation Guide

## 1. Installation Conditions

Supported doors are from 1 3/8 to 4" thick.

Custom accessories are required when the door is not within the thickness range.

Opening Direction:



## 2. Installation Tools (For Reference Only)



1. Drill



2. Pencil



3. Tape Measure



4. Hammer



5. Drill Bit



6. Saw



7. Right Angle Ruler



8. Phillips Screwdriver



9. Razor



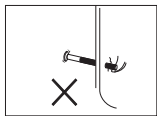
10. Chisel



## 4. Installation Notes

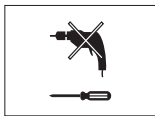
①

In order to ensure successful installation, do not exert excessive force when tightening the screws, which may cause damage to the lock.



②

Select correct screw tool.



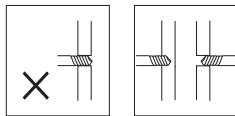
③

Use eye protection when drilling to avoid injury.



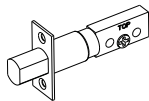
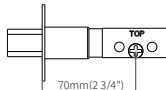
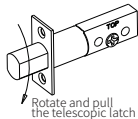
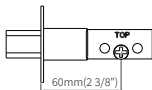
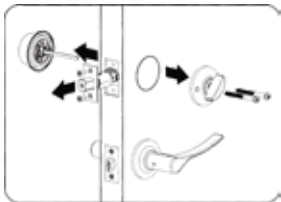
④

In order to prevent unnecessary damage to the door, when prepping door, drill bores from both sides, remember to penetrate the opening on each side.



## 5. Installation Steps

1. Remove the old lock from door.

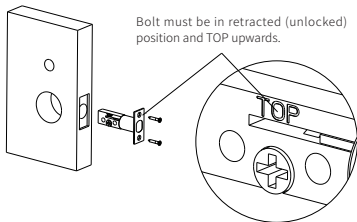


2. Adjust the length of the deadbolt if required.

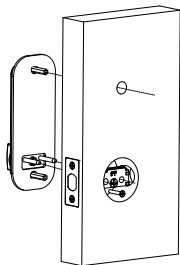
### Note:

The deadbolt has two backset options: 2 3/8" or 2 3/4".

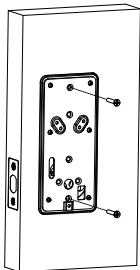
3. Install the deadbolt into the door.



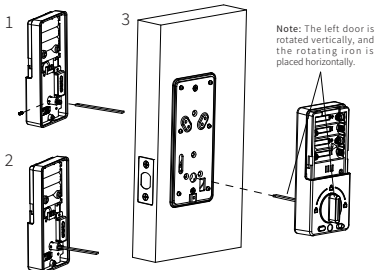
4. Install the front panel in each hole as prepped, (using diagram on page 3) and attach Aztec front panel to door.



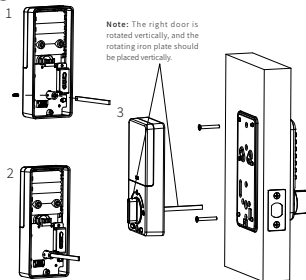
5. Secure the front panel and rear retainer plate with two M4x30 screws.



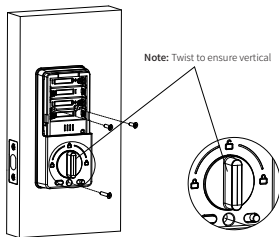
6.1 Lock tailpiece mounting method (**Left-hand door**).



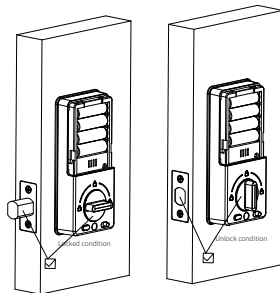
## 6.2 Lock tailpiece mounting method (Right-handed door).



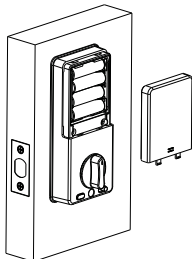
7. Secure interior lock body with two M4x16 screws. Secure to mounting plate with M4x8 screw. Ensure thumb-turn is in a vertical position.



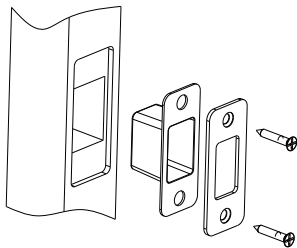
8. Rotate thumbturn by hand.



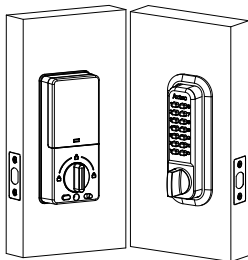
9. Insert batteries in correct position, please ensure the + and - sides of the batteries are lined up correctly. Finally, slide on the battery cover.



10. Install the dust box (if needed), and the strike plate into the frame.



11. Download the TUYA Smart Life app.



## 6. Restore Factory Settings

After holding down the reset button for 5 seconds, the door lock will be restored to the factory default settings



## 7. Low Voltage Alarm and Battery Replacement Method

7.1 When the battery is low, the APP will unlock the door and prompt "Low battery, please replace the battery".

7.2 Battery Replacement Method: Remove and replace with 4 new AA batteries into the battery compartment, ensuring the terminals match the positive and negative alignment. Once the batteries are in place, install the battery cover.

4\*AA batteries



## 8. Sabbath Mode

Slide the switch left and right.

Green indicates electronic operation.

Red indicates Sabbath mode.



Sabbath mode switch

## 9. Mechanical Unlocking and Electronic Unlocking

Quick door opening with mechanical unlocking knob and electronic unlocking button.

Mechanical unlocking knob

Electronic unlocking button



# III. Setting Operation

## App Manual

Download "TUYA Smart Life" from APP store for iOS or from Google Play for Android.



Please read the manual carefully before installation and keep this manual at a secure place.

Please contact your local distributor for information not included in this manual.

TUYA Smart Life is a smart lock management software application. The App communicates with the lock via Bluetooth BLE, and can lock and unlock, receive firmware upgrades, read operation records, etc. The app has multi-lingual support.

The TUYA app allows you to add members and administrators for your smart devices.

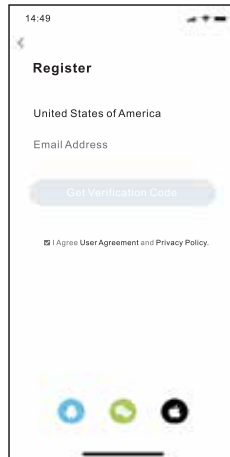
Refer to the TUYA website for more details on the many features.  
<https://www.tuya.com/>



## 1. Create a TUYA Account

If you do not have an APP account, you can choose to register or log in via SMS verification code. Click "Create New Account" to enter the account registration page. Follow the prompts to obtain the SMS verification code and set the password.

If you already have an account, you can click "Log in with an existing account" to log in to the APP, the login method supports password, verification code, and social account logins.



## 2. TUYA Homepage

This is where you can add the gateway and the Aztec Eagle Smart Lock. Choose the “+” from the top right to add devices.



### 3. Use the Gateway with the Aztec Eagle Smart Lock

Enable Bluetooth and Wifi then connect to the network. Have your network password available.

Use the provided cable to connect the gateway to the plug. Plug into power and verify solid red and blue LEDs.

Press and hold the small then button Wait until the red light slowly flashes.

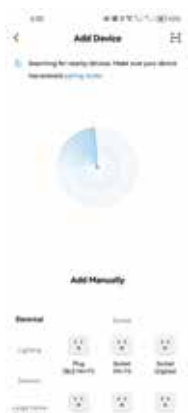
Click the “+” icon to add the gateway.

Enter Wi-Fi information.

Click the “+” icon to add the Aztec Eagle Smart Lock.

On the smart lock, press the unlock button on the lower left side to make the device discoverable.

Click the “+” icon to add the smart lock

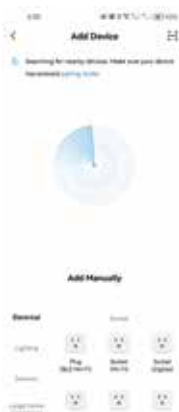


## 4. Use the Aztec Eagle Smart Lock Without the Gateway (BLE only)

Enable bluetooth on your mobile device.

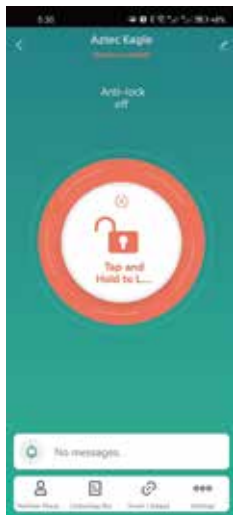
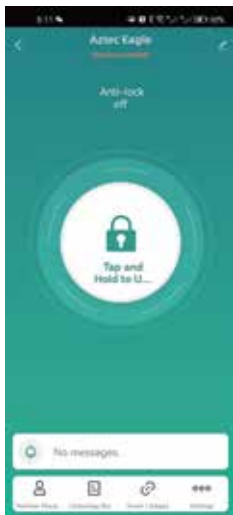
Press the unlock button on the lower left side to make the device discoverable.

Click the “+” icon.

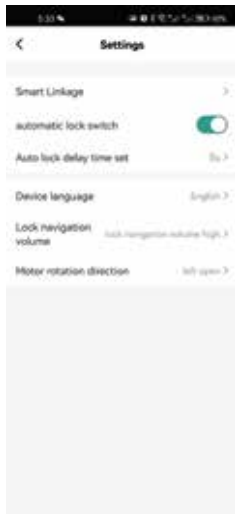


## 5. Bluetooth Unlock

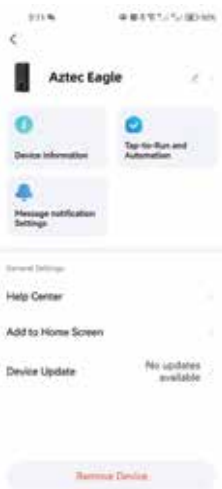
Tap and hold to lock and unlock.



## 7. Volume Adjustment



## 8. Remove Device



# Warranty Policy

1. The manual and the warranty card are included in the package for each product. After installation, please complete the warranty card and keep it as proof of purchase.
2. Full warranty period: 1 year
3. The warranty does not cover the following:
  - A. Damage caused by improper handling, incorrect input voltages, or tampering.
  - B. Damage caused by natural disasters, such as earthquakes, fires, or floods.
4. Repairs outside of the warranty scope will incur a fee.
5. If the product malfunctions, please contact your local distributor for repair. Provide your name, address, phone number and the detailed description of the issue.