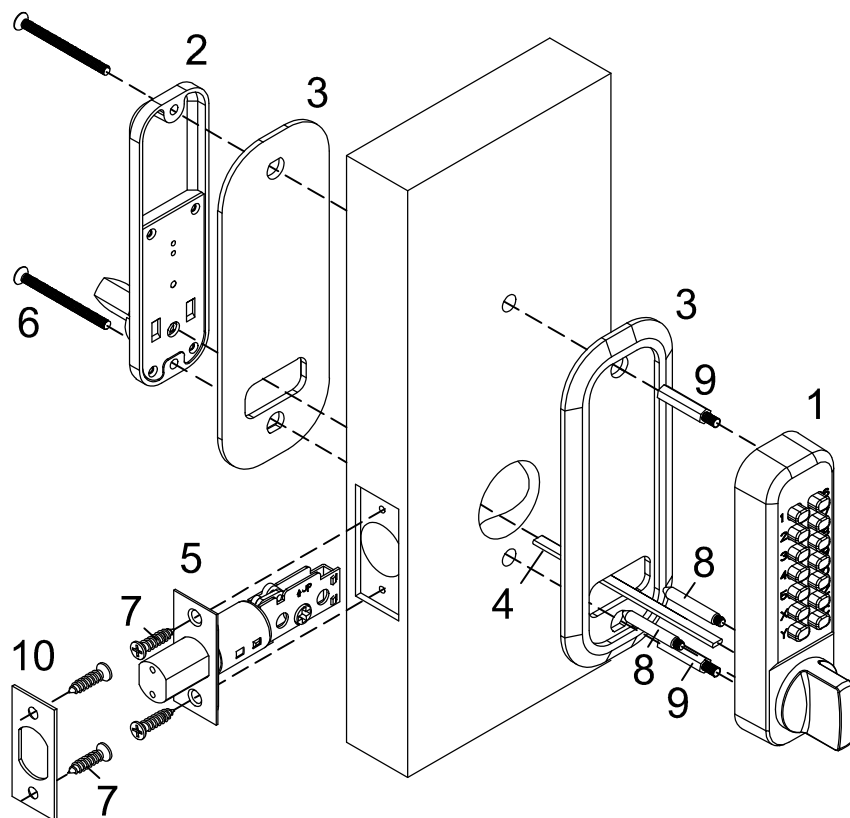
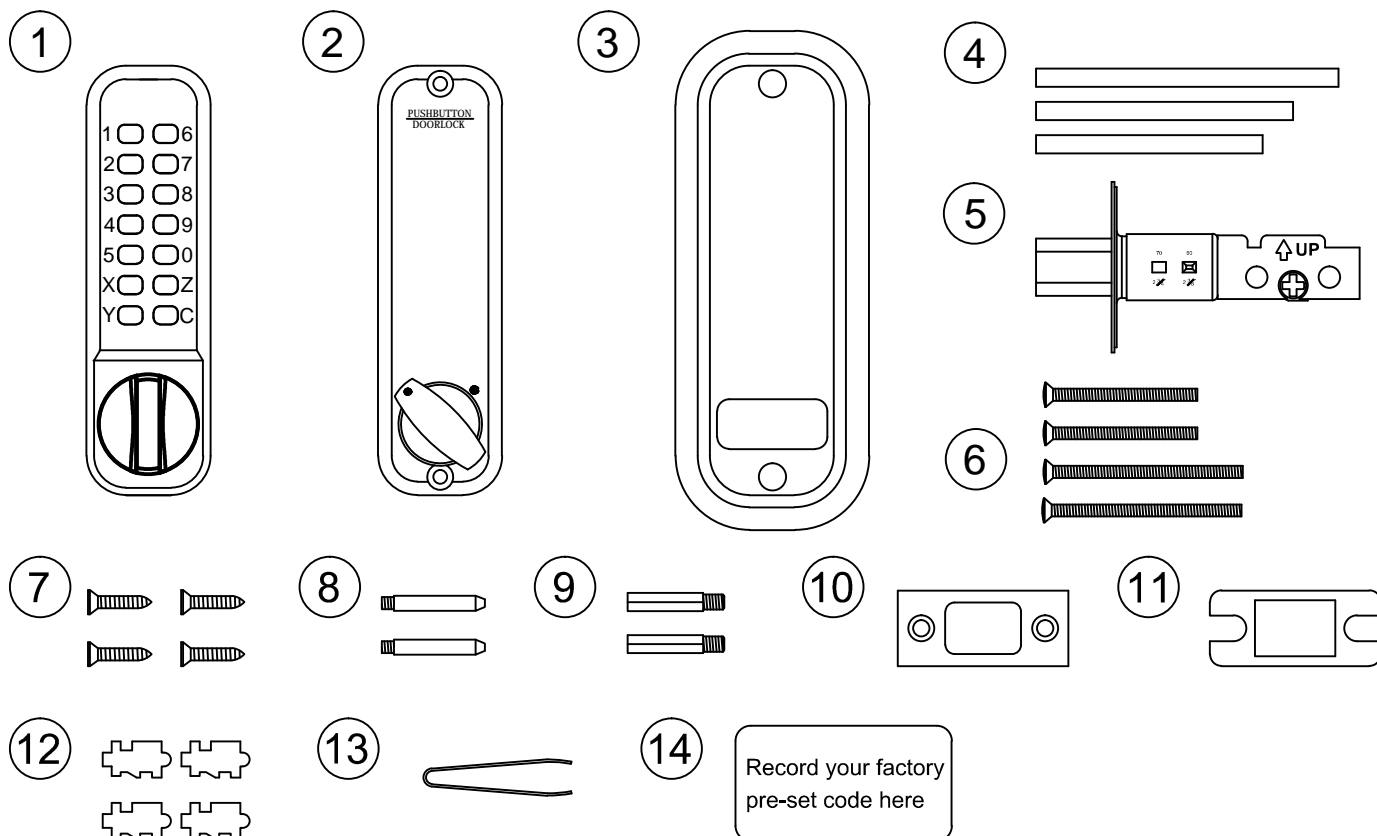


# ASL2500 Lock Set-Installation Instructions



1. Outside Body
2. Inside Body
3. Rubber Trim Plate x 2
4. Spindles x 3 (only one is used)
5. Adjustable Deadbolt  
60mm(2 3/8") - 70mm(2 3/4")
6. Fixing Screws Supplied.  
2 pair (36 and 51mm)
7. Wood Screws x 4. Use with  
Deadbolt and Strikeplate
8. Support Pins x 2
9. Hex Bolts x 2
10. Keep Plate
11. Dust Box
12. Spare Colour Coded Tumblers.  
2 pair (red and blue)
13. Tweezers
14. Code Card

## Digital Lock Set-Components





# Installation Instructions

## SPECIAL NOTES:

Before commencing installation check that all parts are working correctly.

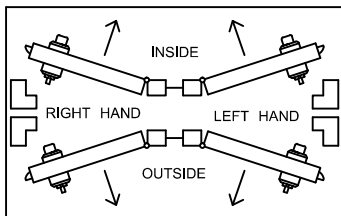
\* Outside Body: Enter code from the pre-set factory code card, turn knob in right directions. The knob should turn and return freely under spring pressure. IF YOU INTEND TO CHANGE THE CODE YOU SHOULD DO IT NOW. Refer to code changing instructions.

\* Inside Body: Make sure that the knob turns freely.

\* Deadbolt: Check that bolt can slide smoothly.

## NEW INSTALLATION:

### 1) Check the Hand of Your Door

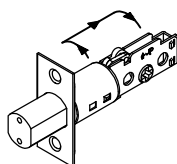


Viewed from the outside (Code Pad Side) your door is right handed if the hinges are on the right.

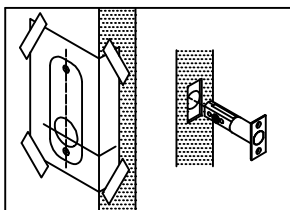
### 2) Adjust Deadbolt (if necessary)

\* Adjustable Deadbolt (#5) is preset to 60mm(2 3/8") backset.

\* To adjust, hold the face plate to rotate the bolt body and pull it back to the 70mm(2 3/4") position.



### 3) Apply the Template



Select the desired position on the door. Fold the template on the dotted 60mm(2 3/8") or 70mm (2 3/4") backset line to suit the deadbolt assembly supplied. Tape the template to the door.

\* Mark and drill two 10mm(3/8") holes and one 40mm(1 9/16") hole as shown on the template.

\* Mark the depth of 95mm(3 3/4") on the drill bit with tape to act as a visible depth limit.

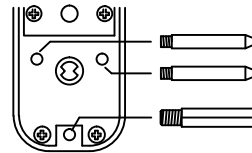
\* Mark the central point on the "centre line of deadbolt" on the edge of the door and drill a 25mm(1") hole, 95mm (3 3/4") deep, keeping the drill level and square to the door.

\* Insert the deadbolt into the hole and mark around the face plate.

\* Remove the deadbolt and cut a 3mm rebate so that the face plate fits flush with the edge of the door.

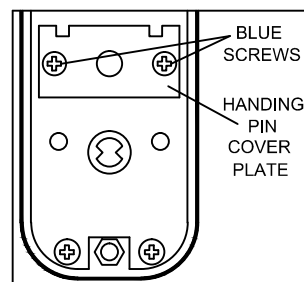
\* With arrow pointed UP, insert Deadbolt and secure with two (2) Wood Screws (#7).

### 4) Fit Support Pin & Hex Bolts



Fit the Deadbolt Support Pins (#8) and Hex Bolts (#9) in the back of the Outside Body.

### 5) Handing the Digital Exterior Code Pad Assembly

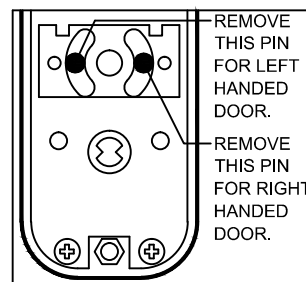


Remove the two BLUE screws and handing pin cover plate.

\*For left handed door, use plier to remove the left side pin out.

\*For right handed door, use plier to remove the right side pin out.

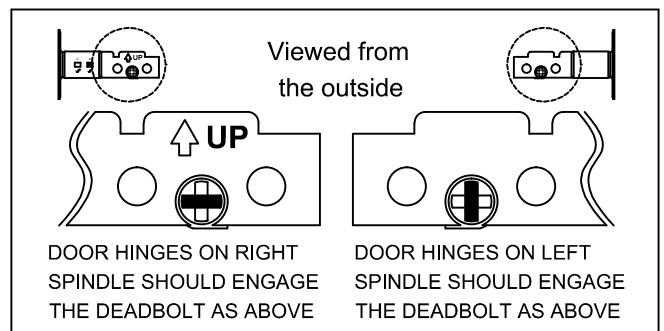
Put the cover plate and two BLUE screw back on.



REMOVE THIS PIN FOR LEFT HANDED DOOR.

REMOVE THIS PIN FOR RIGHT HANDED DOOR.

### 6) Positioning the Spindles

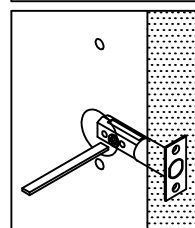


Viewed from the outside

UP

DOOR HINGES ON RIGHT  
SPINDLE SHOULD ENGAGE  
THE DEADBOLT AS ABOVE

DOOR HINGES ON LEFT  
SPINDLE SHOULD ENGAGE  
THE DEADBOLT AS ABOVE

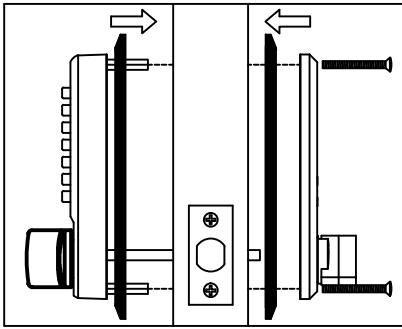


Three spindles are provided. Select the spindle length to suit the door thickness.

\* For door thicknesses less than 36mm use 75mm spindle.

\* For door thicknesses of 37-51mm use 85mm spindle and door thicknesses more than 52mm use 100mm spindle.

## 7) Mounting the Lock



- \* For door thicknesses less than 42mm use the shorter screws (36mm)(#6).
- \* Fit the Rubber Trim Plate (#3) to both the Outside Body (#1) and Inside Body (#2).
- \* Hold the Outside Body onto the door with the spindle in

position and ensuring that the bolt support post engages the hole in the deadbolt.

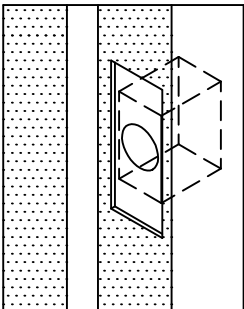
- \* Locate the Inside Body on the inside of the door engaging the spindle in the knob hub.
- \* Screw both sides together using the fixing bolts top and bottom.
- \* Before final tightening of fixing screws make sure the lock is vertical. Test the mechanism to ensure that the lock functions correctly and moves easily.

DO NOT overtighten the fixing screws-this may cause distortion and lead to poor operation.

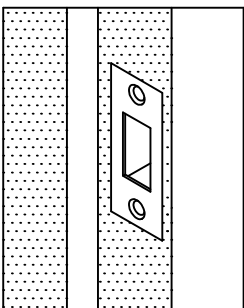
**IMPORTANT :**

CHECK THAT THE CODE WORKS TO AVOID A LOCKOUT BEFORE CLOSING THE DOOR.

## 8) fitting the Keep Plate



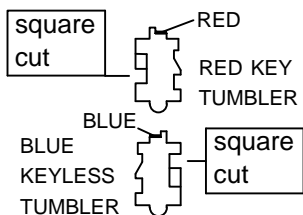
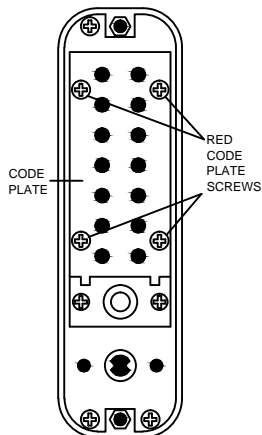
- \* Close the door against the door frame and transfer the centre of the deadbolt onto the jamb.
- \* Position the keep plate on the frame so that it lines up with the deadbolt.
- \* Mark the inner and outer edges of the keep plate and cut a rebate so that it fits flush with the surface of the door frame.



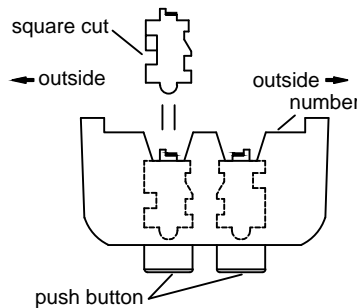
- \* Drill or cut a recess 25mm (1") deep for the deadbolt.
- \* Ensure your drill hole in the door frame deep enough to accept the 25mm (1") throw
- \* Fit the keeper plate using only one wood screw at first to ensure that it is positioned accurately.
- \* The deadbolt should enter the aperture easily. When satisfied secure the keep with remaining screws.



# ASL2500 Changing the Code Number



- 1) Remove the lock from the door.
- 2) Remove the 4 red code plate retaining screws from the back of the code pad assembly. Take extra care to keep the lock body on a flat surface when removing the code plate to avoid spilling the small code module components.
- 3) From the factory code setting, there are 5 RED coloured key active code tumblers and 8 BLUE coloured "keyless" code tumblers plus 1 neutral code tumbler in the "C" position. (this is the code clearing tumbler and must not be removed.)

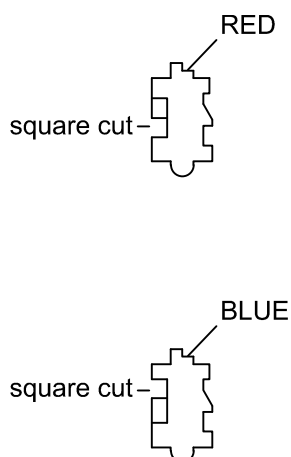
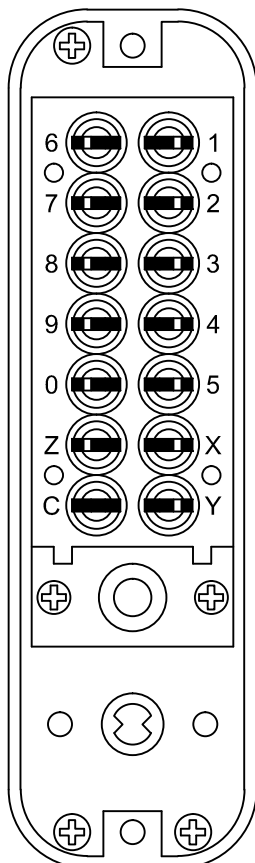


- 4) Push and hold the "C" button. Never attempt to remove the "C" button code tumbler. With the "C" button held down, remove one or more code tumblers using the tweezer supplied.
- 5) Note the different shapes of the code tumblers before re-inserting them into the code module.

RED and BLUE code tumblers have the square cut low and high respectively. WHEN REPLACING CODE TUMBLERS THE SQUARE CUT MUST ALWAYS FACE THE OUTSIDE OF THE LOCK BODY.

- 6) Establish and write down your new code insert the appropriate coloured tumbler next to the code numbers in the module. DO NOT LEAVE ANY TUMBLER POSITION EMPTY. With the spare tumbler provided in the screw pack you can reduce or increase your code to 4 or 6 digits.
- 7) Replace the code plate and secure with the 4 red retaining screws.
- 8) Check the code by pressing the "C" button followed by the code number.
- 9) The knob should turn freely in both directions if not return to step 4 and confirm that the instructions have been fully followed.
- 10) Reinstall the lock place the spare colour code tumblers in a safe place with the instructions and code.

**IMPORTANT : To change the code press the "C" button and hold it down continually while removing and replacing the code tumbler.**



## IMPORTANT:

BEFORE CHANGING CODES THE "C" BUTTON MUST BE DEPRESSED AND HELD IN THE DOWN POSITION THROUGHOUT CODE CHANGING PROCEDURE. FAILURE TO DO THIS WILL DAMAGE THE CODE MODULE. SIMILAR DAMAGE WILL OCCUR IF CODES ARE NOT RE-INSERTED CORRECTLY. PLEASE REFER TO CODE CHANGE INSTRUCTIONS. AS A GUIDELINE RED OR BLUE SHOULD ALL BE IN LINE IF CODES ARE CORRECTLY INSERTED.